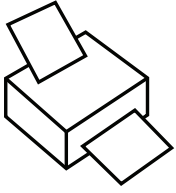


 **Y toidelo**

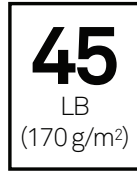


stackhouse™ **lounge chair**

Instructions



Print the furniture on



heavyweight paper, for

example 45lb or higher. Cut the furniture



along the solid

lines. Use an x-acto knife

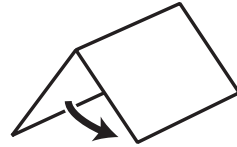


for the internal lines.

Score the dotted lines.

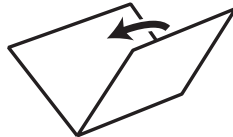


Fold these lines ----- like mountains

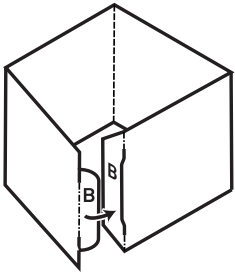


and

these ----- like valleys

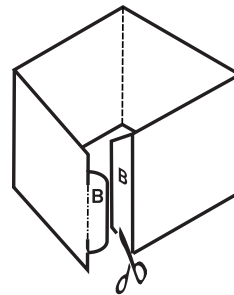


Method 1 (without glue): Insert the tabs (B) in the corresponding slots.

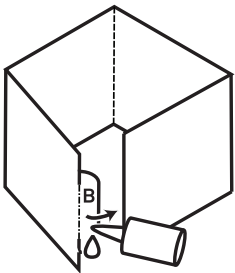


(You don't *have* to start with "A".)

Method 2 (with glue): Cut off the slots

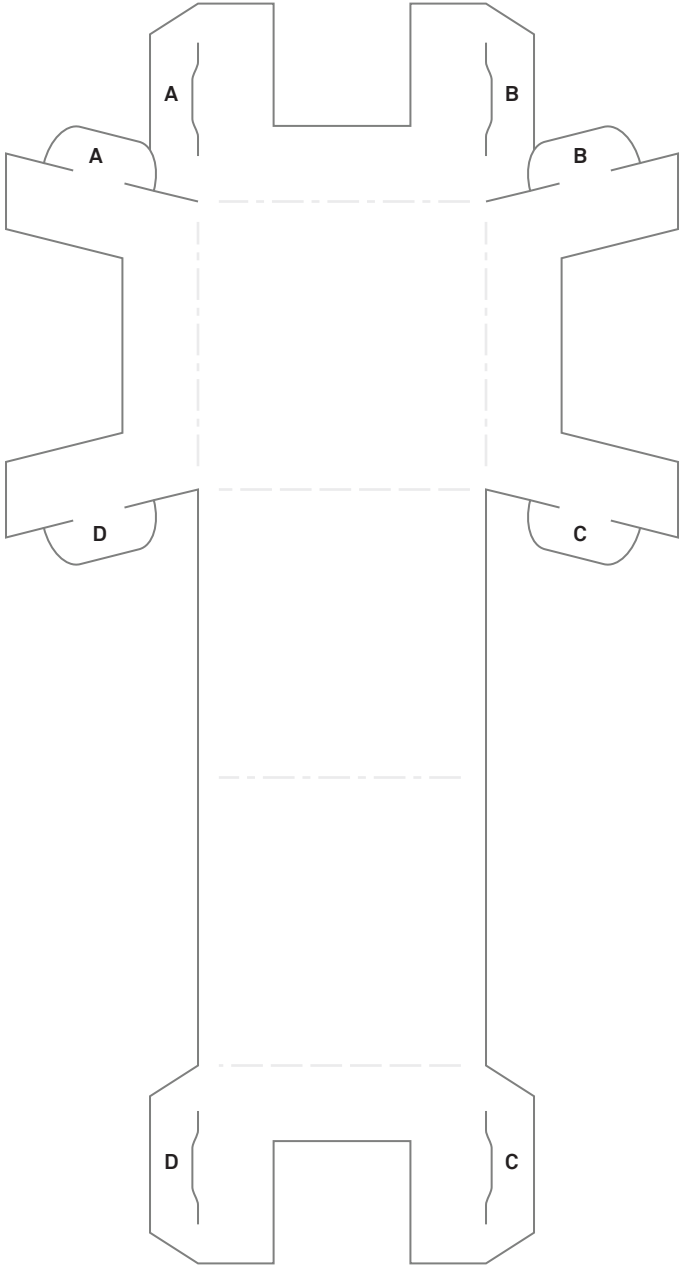


and glue the tabs



at the corresponding location.

stackhouse™ lounge chair



Toideloi Stackhouse Paper Furniture

Copyright

Those who have received or purchased the Toideloi Stackhouse Paper Furniture are neither authorized nor permitted to transmit copies of this file to anyone without written permission. Giving away copies to people who haven't paid for them is illegal under international copyright laws and will submit you to possible legal action. Therefore, the utilization of this file is limited to personal use only. If you have purchased this file from anywhere other than the main product website, please inform us right away.